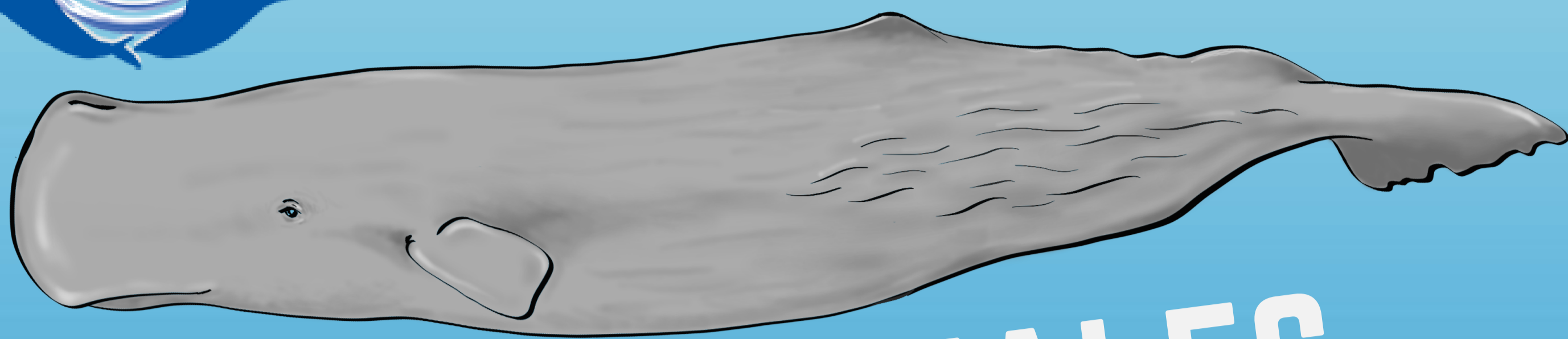




Dolphin Research Australia

Knowledge, Awareness, Action – Conserving Our Seas



GARBAGE & WHALES Marine Debris

It can take many years for marine debris to breakdown

HOWEVER PLASTIC DOESN'T DECOMPOSE.
IT JUST GETS SMALLER

Australia uses 2.93 million tonnes of plastic each year
(**& only less than 9% is recycled**)

Plastic releases toxins in to the ocean and breaks up in
to tiny micro-plastics impacting all marine biodiversity

96%

OF ALL MARINE ANIMALS POTENTIALLY
INGESTS PLASTICS;
INCLUDING WHALES
AND DOLPHINS

1000

PIECES OF RUBBISH WERE
RECENTLY FOUND IN THE
STOMACH OF DEAD SPERM
WHALE. THIS IS ONLY ONE
EXAMPLE OF A GLOBAL
'GARBAGE WHALE'
EPEDEMIC

www.dolphinresearchaustralia.org

COMMON HOUSEHOLD MARINE DEBRIS & LIFESPAN IN THE OCEAN :



ALUMINIUM CANS

80-100 YEARS



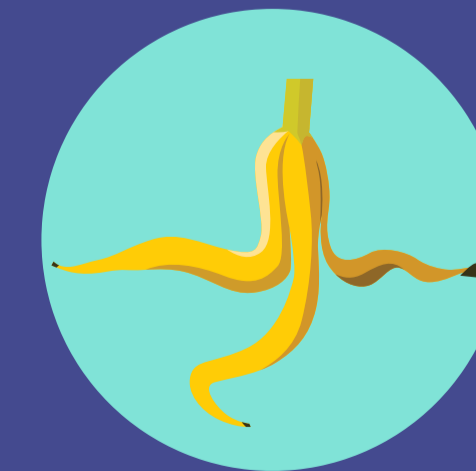
CIGARETTE BUTTS

1-5 YEARS



PLASTIC BAGS

20 YEARS



FOOD SCRAPS

2-5 WEEKS



PLASTIC DRINK CONTAINERS

450 YEARS



DRINKING STRAWS

200 YEARS